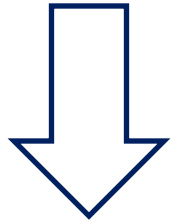


# Can We Build a Social Safety Net through Public-Private Partnerships in Japan?

–A case study with the Social Action Program of  
Osaka Prefecture Council of Social Welfare–

**Shinichi Murota** <shin1@stirps.net>  
Doshisha University Graduate School  
Prepared for the 4<sup>th</sup> Conference of  
East Asian Social Policy research network  
October 20<sup>th</sup>, 2007  
at University of Tokyo, Japan

## Introduction:::



Why interested? And why important?

- ❑ Social Policies only function with good practices (and vice-versa)
- ❑ The conflict between Social Action Program (SAP) and safety net
- ❑ Snapshot of today's public-private partnerships in Japan

## Definitions::

- Public
- Private
- Partnership
- Collaboration
- (Social) safety net

## Acronyms::

- SAP (Social Action Program)
- OPCSW (Osaka Prefecture Council of Social Welfare)

# Backgrounds:::

- ❑ Privatization of welfare services
- ❑ Social Welfare Act 2000
- ❑ Community-based social welfare planning
- ❑ Community-based initiatives

**Community-based  
Social Welfare**

**Workfare**

Crisis of social welfare program

- Increased number of welfare recipients
- Devolution
- “From welfare to work”

# What is SAP?:::

## Program Launched in 2004

- ❑ Hosting organization: OPCSW
- ❑ Sponsored by “the Working Group for Welfare Facilities for the Aged” >> Social Action Fund
- ❑ Subsidized by Osaka Prefecture government

Outcome of public-private partnerships on a policy level

## Purposes

- ❑ To provide safety net for the deprived  
(filling the gap between existing programs)
- ❑ To provide financial support if necessary  
(up to 100,000 yen, approx. 420 pounds)

## What is SAP?:::

### Two Kinds of Social Workers

- ❑ Community Social Workers (400 appointed)
- ❑ Point-Social Workers (48 full-time)

### Achievements from last 3-year

- ❑ 972 cases with financial supports
- ❑ 85 million yen (approx. 360k pounds) in total

## Case Studies:::

### Research Questions:

Is there patterns of collaboration between SAP and the social assistance program?

Is the relationship between SAP and the social assistance program favorable to each other?

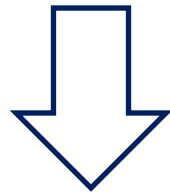
### Research Methods

1. Data analysis
2. Interviews
3. A survey

## Data Analysis:::

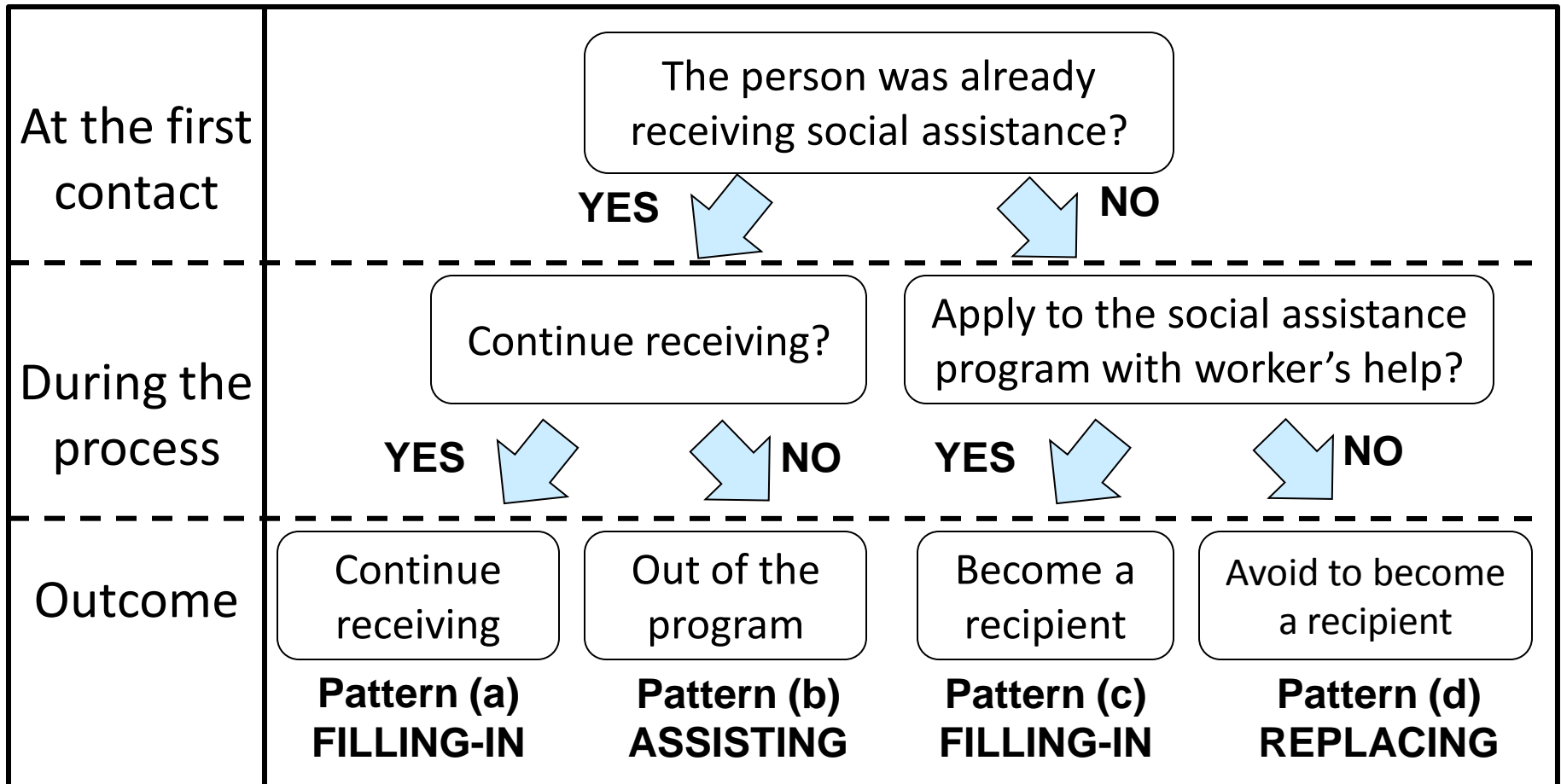
### **972 cases were reported during the last 3 years**

- ❑ Reported by both community social workers and point-social workers
- ❑ Workers provided financial support in all 972 cases
- ❑ More than two thirds of cases are related to social assistance



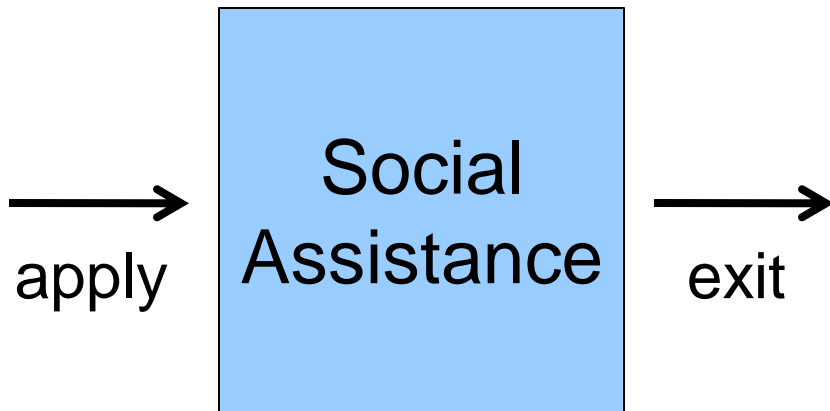
Created patterns of collaborations

# Data Analysis: patterns of collaboration

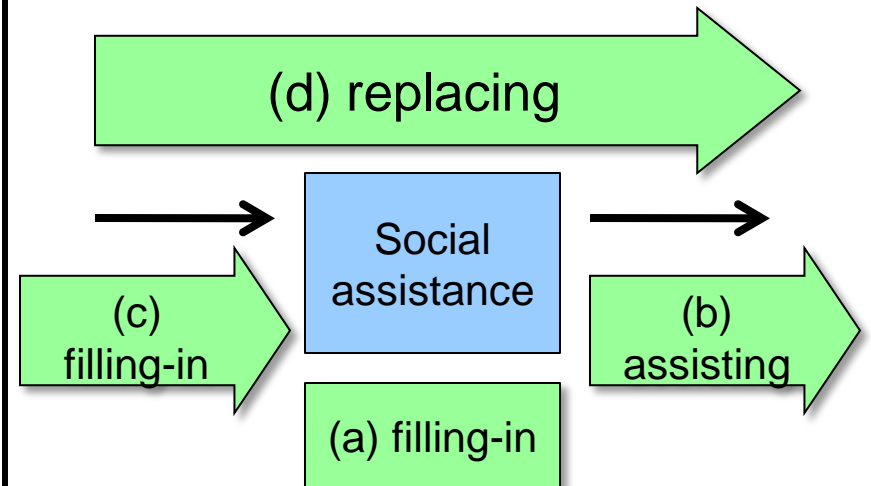


# Data Analysis: patterns of collaboration

ordinal safety net  
with social assistance



safety net with collaboration  
between social assistance and  
Social Action Program



# Data Analysis: patterns of collaboration

a) filling-in	b) assisting	c) filling-in	d) replacing
14.0%	4.8%	61.8%	19.4%

	a) filling-in	b) assisting	c) filling-in	d) replacing	TOTAL
With Fund	26 (11.7%)	6 (2.7%)	101 (45.5%)	89 (40.1%)	222 (100%)
Without Fund	52 (23.1%)	2 (0.9%)	59 (26.2%)	112 (49.8%)	225 (100%)
<b>TOTAL</b>	<b>78 (17.4%)</b>	<b>8 (1.8%)</b>	<b>160 (35.8%)</b>	<b>201 (45.0%)</b>	<b>447 (100%)</b>

# Data Analysis: patterns of collaboration

ORGANIZATION & AGENCY	AVERAGE SCORE
Facilities for the aged	0.78
One-stop social care service center	1.26
Community care support center	0.89
“Care planning center”	1.22
Welfare facilities other than service for aged	0.56
<b>Government (welfare office)</b>	<b>2.07</b>
Government (Children’s aid and services)	0.85
Government (Public health center)	1.15
Government (other)	0.89
Local council of social welfare	1.15
Local guardian	0.74
Hospitals and clinics	1.26

\*0 as no reference at all, 1 as a few references, 2 as some references, and 3 as most references

# Data Analysis: patterns of collaboration

	# of cases	# of cases with fund	point of reference “welfare office”
Pearson’s r	0.225	0.199	-0.012

	(a) filling-in	(b) assisting	(c) filling-in	(d) replacing
with Fund	0.252	0.144	0.322	0.468**
without Fund	0.356*	0.270	0.213	0.466**